

ENGINEERING BULLETIN

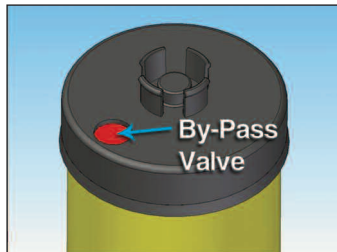
Revised August 10, 2010
Original November 17, 2009

New Design of Lube Filter Elements

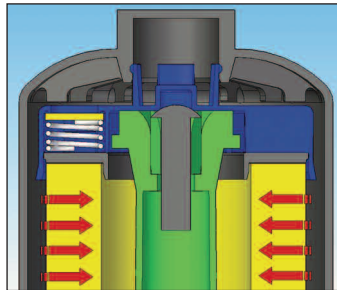
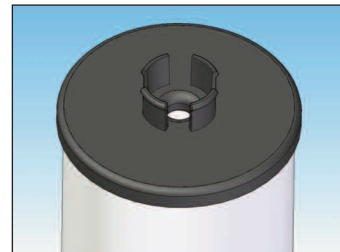
Hastings Premium Filters has redesigned some of our lube filter elements. The new design utilizes an end cap with a by-pass valve to allow oil to by-pass the media if the media becomes too restrictive to flow sufficient oil to the engine. The by-pass valve, in these redesigned elements, is not dependent upon the by-pass valve within the housing. The continued reuse of the by-pass valve in the housing may cause it to weaken or wear over time, allowing oil to by-pass the filter media prematurely.

The incorporation of the by-pass valve within the end cap of the element gives the customer the benefit of a new by-pass valve with the installation of each new Hastings filter. Hastings has performed extensive testing on the new design of these filters to verify that we continue to provide our customers with filtration products that meet the excellent filtration performance expected from Hastings Premium Filters. Please look for this new design in your upcoming orders of the LF552, LF555, LF557, LF558 and LF584 filters.

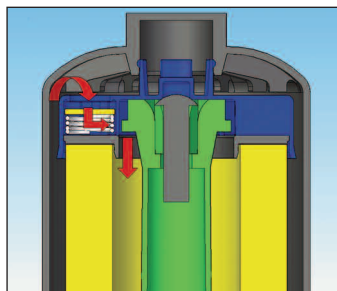
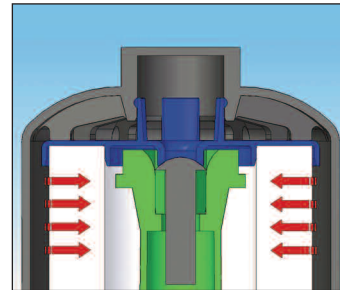
New Design



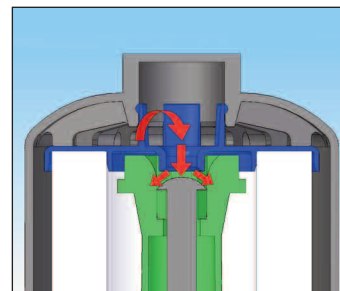
Previous Design



By-Pass Valve Closed



By-Pass Valve Open



**If you have further questions,
please contact our
Service Engineering Team at (800) 887-8836.**